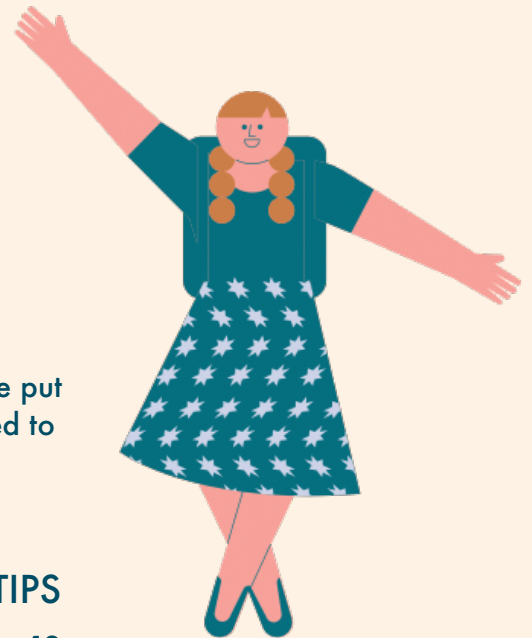


# MW MANOR WEST HOTEL

★★★★



## WELCOME TO MANOR WEST HOTEL

We are so pleased you are here. To make your life easier we have put together a survival guide covering some important things you need to know about your stay at Manor West Hotel



## TOP TIPS

Check out: 12pm

Check in: 3pm

WiFi Name: "Manor West Hotel WiFi"

Password: mwhguest

Dial 0 for Front Desk Assistance

Dial the room number of a room you wish to contact

Dial 9 then the number if you wish to call out of the hotel.

Don't forget to check if you need an international dialling code  
( Charges apply )

## MENU TIMES

Breakfast is served in Seasalt, our lobby café  
from 7am - 10am each day

Brunch in Seasalt 10am - 12pm daily  
coffee & treats served until 5pm

Lunch and dinner served daily in The Mercantile Bar  
from 12 - 9pm



## ALL THINGS FOOD & DRINK

Enjoy delicious brunch & lunch in Seasalt Café & lunch & dinner in the Mercantile Bar  
Our Room Service Menu is available daily from 12.30pm with a €5 per person tray charge

## BREAKFAST IN BED

If you would like to have your breakfast in bed, it is available from 7am - 10am  
To order your breakfast in bed, fill out a breakfast card and place it on the outside  
door handle of your room prior to 04:00am on the morning you require.

A tray charge of €5 per person applies.

## TV

Manor West TVs are 'SMART', they offer 42 channels which are a mixture of national and international channels and 7 radio channels

To CAST from your device

\* Go to the main menu on the TV

\* Choose CAST option

\*On your own device connect to the TV's WiFi & follow the instructions.

You will be given a password or a QR code

\*Open your favourite app on your device and press the CAST button to view

Please call us by dialling '0' if you have any problems connecting



## THE DEN

The Den is full of toys, books, activities & art stuff. Children will enjoy getting lost in The Den's happy space. Suitable from 3-12 years of age, The Den is open from 8am-8pm Parents must always supervise their children. To book a time slot for The Den please contact the hotel reception

## LAUNDRY SERVICES

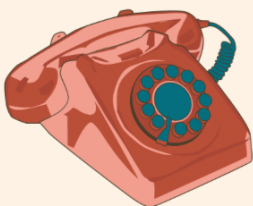
We offer Laundry Services through a Dry Cleaner in Tralee from Monday to Saturday. If you require this service, please place your laundry in a bag that can be found in the drawer of the vanity unit in your room. Once completed bring the bag, along with your laundry list, to Front Desk prior to 9am for same day service. If after 9am, the laundry will be ready the following day

## AIR CONDITIONING

The air conditioning unit in your bedroom can be regulated using the switch near the wardrobe/luggage rack

## MISSING SOMETHING ?

Should you require additional linens, pillows, towels, tea, coffee, dental kits, shaving kits, etc., please reach out to the Front Desk Staff and they will do their best to accommodate your request



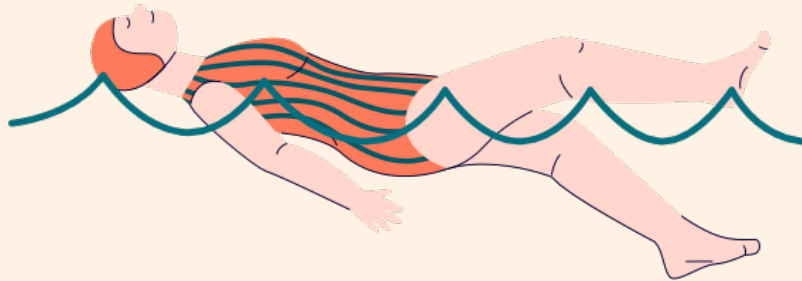
## MEETING ROOMS

Our meeting rooms have all the features you need to engage with clients, host meetings interviews & more. We can accommodate meetings from 2 people up to 200.

If you are interested in renting a meeting room during your stay, please speak with the Front Desk

## LEISURE CLUB

Our leisure club is located beside reception. Opening hours are Mon-Fri 6.45am - 9.30pm with last entry 9.00pm. Sat, Sun & Bank Holidays 8.00am-8pm with last entry at 7.30pm. The Leisure Club is strictly for adults only after 7pm daily. Swimming hats must be worn in the pool at all times. Lockers are available and require a refundable €1 coin



## BUS/TRAIN STATION

Tralee bus and train stations are just a 15-minute walk, with regular connections to local towns and Cork, Limerick and Dublin. Should you require a map to help you on your journey, stop in at the Front Desk and a staff member will be able to provide both a map & directions



## FIRE

If the fire alarm rings continuously, please follow the fire evacuation route on the back of the bedroom door. Please familiarise yourself with the evacuation routes



## SMOKING

For the benefit of everyone smoking is strictly forbidden in all inside areas of the hotel, including guest bedrooms. Evidence of smoking will result in a €150 deep cleaning fee to the room. The smoking area is outside the front of the hotel.

## LOCAL ATTRACTIONS

If you are looking for information on local attractions such as Banna Beach, Tralee Bay Wetlands or The Blennerville Windmill, our Front Desk team can help you in the form of advice, maps and brochures.

We highly recommend The Tralee Greenway which is a 13km off road path which takes you from Tralee town centre to the beautiful beachside village Fenit, ideally for walking or cycling.

Other local attractions include Siamsa Tire, Ireland's National Folk Theatre, The Omniplex Cinema, Aquadome, Kerry County Museum, Bowling Buddies plus plenty of shopping in ManorWest retail park.



Manor West Hotel  
Tralee, Co. Kerry, V92 YC59  
Phone: 00 353 066 7194500

[www.manorwesthotel.ie](http://www.manorwesthotel.ie) | [info@manorwesthotel.ie](mailto:info@manorwesthotel.ie)